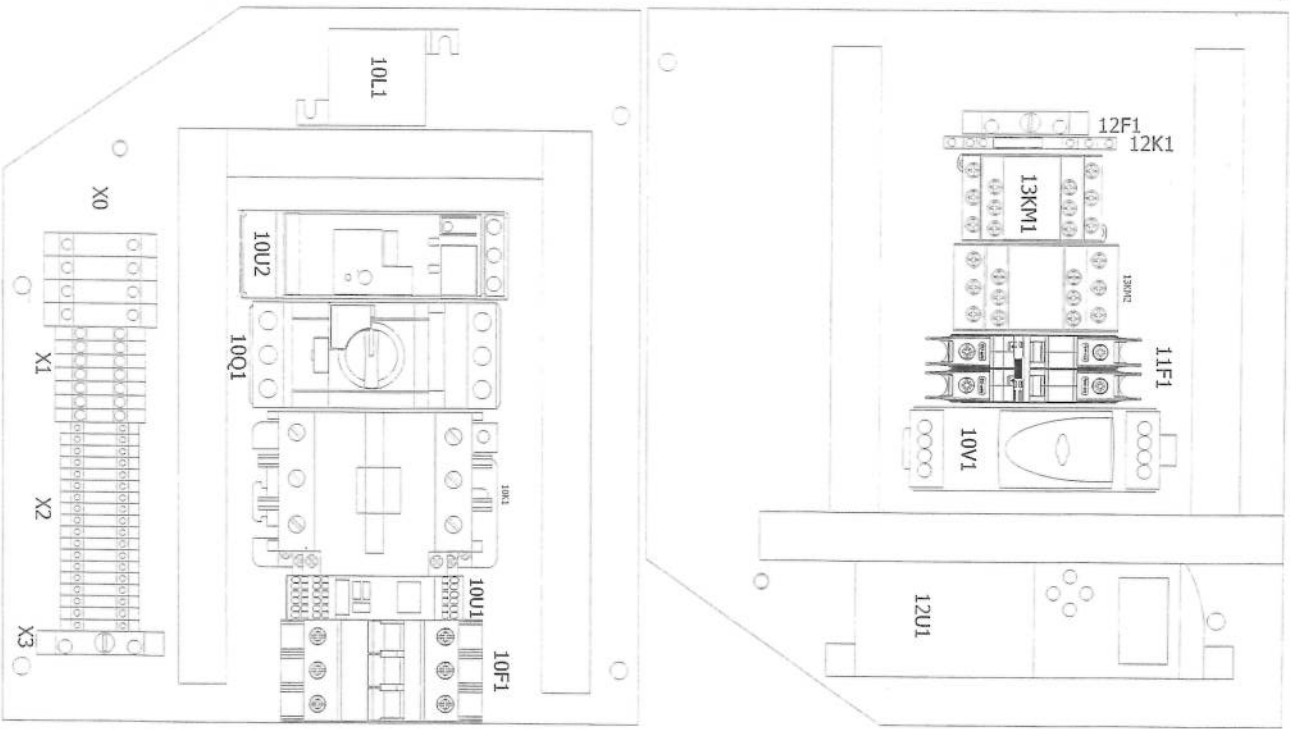
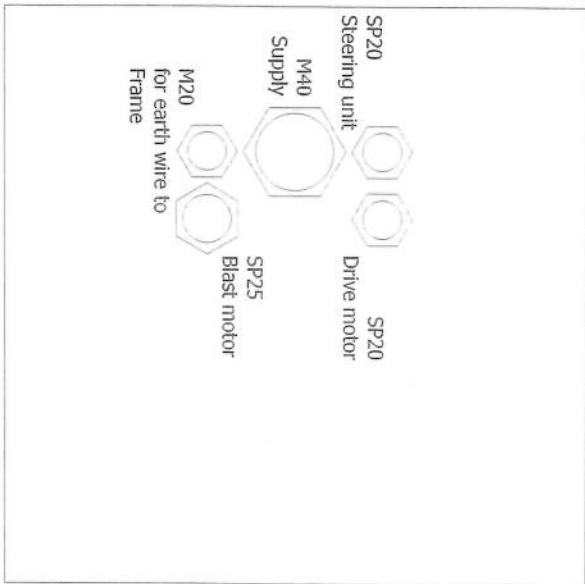
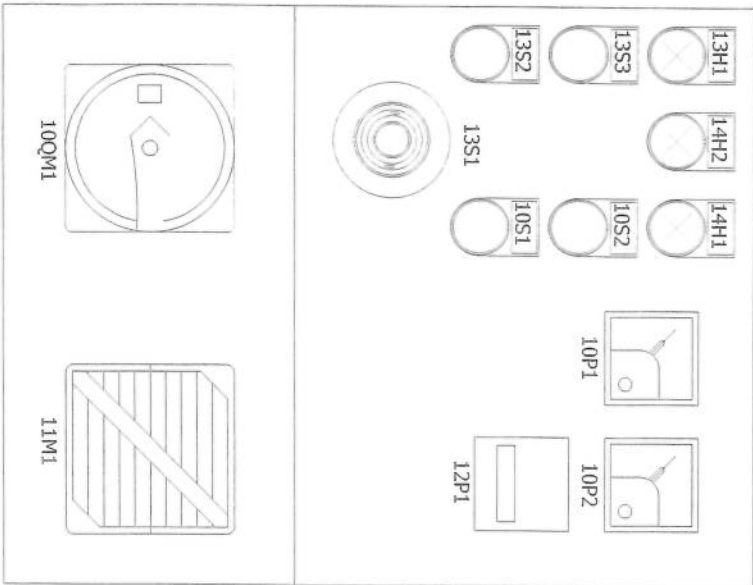




Project description		1-15DS 3X240V OVP TRUBRAND	
Drawing number		PJ15.1179.00.1	
Type number		E10787/ULCSA	
Power supply	240V 60Hz		
Input lead	Input lead		
Control Voltage	240Vac/24Vdc		
Status	Preliminary		
Year of Manufacturing	2015		
Created on	9-9-2015	by	KR
Edit date	13-11-2015	by	Hvdb
		Number of pages	23

6M35

CAB



Modification	Date	Name	Date	13-11-2015
			Est.	HvdB
			Appr	
			Last print	13-11-2015

1-15 DS 3X240V OVP

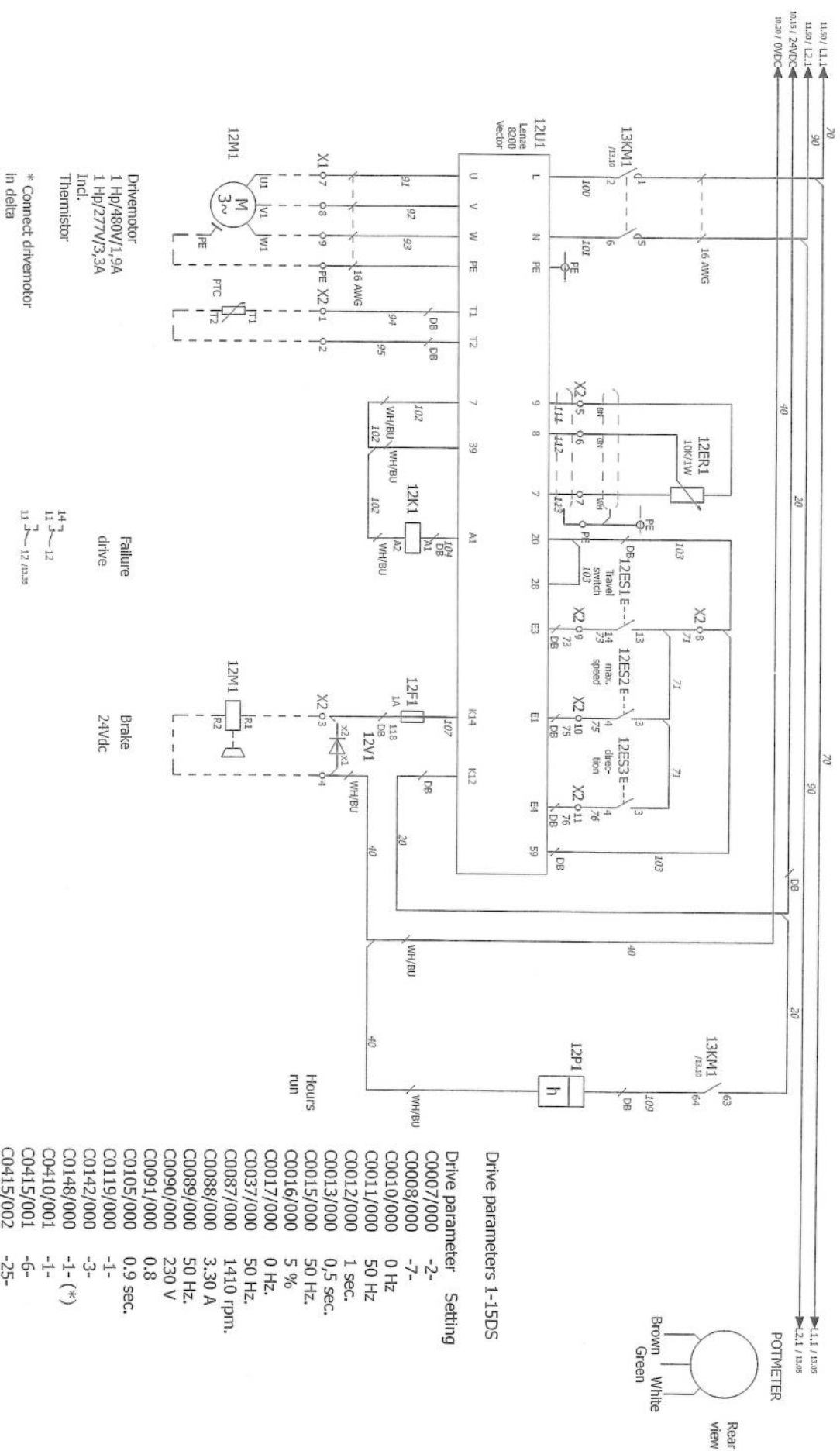


Panel layout

Part:	TRUBRAND	= E1
Blanking number:	PJ15.1179.00.1	+
		Page



05	10	15	20	25	30	35	40	45	50
10									
Modification	Date	Name	Date	Ed.	KR	Project name:	Page number:		
			30-9-2015			1-15 DS 3X240V OVP	Page number:		
			Apr						
			13-11-2015						
							Main-Voltage		
							Model:	TRUBRAND	
							Following number:	PJ15.1179.00.1	
									Page 11



(*) Motor identification will be 0 after applying

Publication		Date		Project name		Page		13	
		13-11-2015				1-15 DS 3x240V OVP			
		EIA							
		Appr							
Date		Name		Last print		13-11-2015			
				Terminal Diagram = EI+-1F4				Make:	
								TRUBRAND	
Drawing number:				PJ15.1179.00.1				= EI	
								Page	
								14	

14		Date 13-11-2015	Project name:		Model	= E1
		Eel. HWDE				+
		Appl.				
		Last print 13-11-2015				
Publication	Name				TRUBRAND	
					Terminal Diagram =E1+X0	
					PJ15.1179.00.1	Page 15

Terminal diagram

[illegible]

Terminal diagram

Strip = E1+-X2									
Cable name					Cable name				
Page / column	Cable type	Connection point	Target designation	Jumper	terminal	Connection point	Target designation	Cable type	function text
/12.15		T1	-12M1		1	T1	-12U1		Thermistor Driver motor 1 Hg/480V/1.9A 1 Hg/277V/3.3A Ind. Thermistor Brake
/12.15		T2	-12M1		2	T2	-12U1		
/12.30		R1	-12M1		3		-12F1		
/12.30		R2	-12M1		4		-10V1		Brake 24Vdc
							-12V1		
/12.20			-12ER1		5	9	-12U1		
/12.20			-12ER1		6	8	-12U1		Speed Driver motor 1 Hg/480V/1.9A 1 Hg/277V/3.3A Ind. Thermistor =
/12.20			-12ER1		7	7	-12U1		
/12.25		13	-12ES1		8	20	-12U1		
/12.25		14	-12ES1		9	E3	-12U1		Travel switch max. speed direction
/12.30		4	-12ES2		10	E1	-12U1		
/12.30		4	-12ES3		11	E4	-12U1		
/12.20			PE		PE				Driver motor 1 Hg/480V/1.9A 1 Hg/277V/3.3A Ind. Thermistor

Terminal line-up diagram

1
2
3
4
5
6
7
8
9
10
11
PE

[illegible]

Parts list E1

device tag	Quantity	designation	Type number	Brand
-CAB	1	1-10/15/20/200 univessel empty	1-10DS EMPTY	Haene
-CAB	2	Montgroot B&H 25x80 NM VDP=56	TT-E 25X80 MONTGROOT	Generic
-CAB	1	Metal galvanneal, 75/535/41 2M	TES35 MOUNTAINAL GROOVE	Generic
-CAB	2	overdrive-forward zelfk60*10 witte p/zw letter	RESOPAL 2-200T/1	Generic
-CAB	1	speed control zelfk4-45*10 witte p/zw letter	RESOPAL 2-200T/2	Generic
-CAB	1	Bocht 90 M20 hwy* M20 ulbw	BLFG13/90	Generic
-CAB	2	FITTING @16 M20	SP16/M20/A	Generic
-CAB	2	FITTING @16 M20	SP16/M20/B	Adapflex
-CAB	1	FITTING @16 M20 DBAALBAAR	SP16/M20/B	Adapflex
-CAB	2	Beschermang metaal + pvc 16-13 zwart	SP16/ZWART	Adapflex
-CAB	1	FITTING @25 M25 vast	SP25/ZWART	Adapflex
-CAB	1	FITTING @25 M25 DBAALBAAR	SP25/M25/A	Adapflex
-CAB	1	Beschermang metaal + pvc 25*21,4 zwart	SP25/ZWART	Adapflex
-CAB	3	Cable gland M20*1,5 polyamide 50,6/0	WARTEL PA M20*1,5	Jacob
-CAB	1	Cable gland M40*1,5 polyamide 50,6/0	WARTEL PA M40*1,5	Jacob
-CAB	3	Cable gland nut M20*1,5 brass, nickel-plated	WARTELMOER M20*1,5	Jacob
-CAB	1	Cable gland nut M25*1,5 brass, nickel-plated	WARTELMOER M25*1,5	Jacob
-CAB	1	Cable gland nut M40*1,5 polyamide 50,2/0PA	WARTELMOER PA M40*1,5	Jacob
-CAB	15	Internal wire black AWG14 2,5mm2 UL-CSA	AWG 14 ZWART	LAPP
-CAB	30	Internal wire red AWG18 1,0mm2 UL-CSA	AWG 18 ROOD	LAPP
-CAB	1	Internal wire black AWG18 1,0mm2 UL-CSA	AWG 18 ZWART	LAPP
-CAB	15	Internal wire red AWG22 0,5mm2 UL-CSA	AWG 22 ROOD	LAPP
-CAB	15	Internal wire darkblue AWG22 0,5mm2 UL-CSA	AWG 22 D BL	LAPP
-CAB	50	Ferrule 0,5mm2 white insulated	G-488 MONT.ADERHUIS	Calpe
-CAB	40	Ferrule 1mm2 red insulated	G-490	Calpe
-CAB	70	Ferrule 2,1mm2 red insulated	G-490+WIN MONT.A.H.	Calpe
-CAB	50	Ferrule 1,5mm2 black insulated	G-491 MONT.A.H.	Calpe
-CAB	20	Ferrule 2,5mm2 grey insulated	G-492 MONT.ADERHUIS	Calpe
-CAB	20	Ferrule 5x2,5mm2 blue insulated	G-492+WIN MONT.A.H.	Calpe
-CAB	18	Ferrule 4mm2 orange insulated	G-493 MONT.AO.HUIS	Calpe
-CAB	6	Ferrule 10mm2 brown insulated	G-495 MONT.ADERH.	Calpe
-CAB	1	Internal wire yellow/green AWG8 10mm2 UL-CSA	AWG 8 GGS	LAPP
-CAB	6	Internal wire black AWG8 10mm2 UL-CSA	AWG 8 ZW	LAPP
-CAB	1	Internal wire white/blue AWG22 0,5mm2 UL-CSA	AWG 22 WH/BL	LAPP
-CAB	1	Sticker for Alamosco/Huband 1-15DS 3x230V	201159	LAPP
-X0	2	Endstein V4 Ilean 9708/2535	ENDSTEIN V4 CONL.ACC	Wieland
-X0	6	Conn. railk. 16MM2 grfs	V05-16 CONN.R.KLEH	Wieland
-X0	2	Conn. railk. 16MM2 grfs	V05-16 CONN.R.KLEH	Wieland
-X1	6	Conn. railk. 4MM2 grfs WK4/U	V05E-5-16 CONN.R.K.	Wieland
-X1	12	Conn. railk. 6MM2 grfs	V04-4 GRDS CONN.R.K.	Wieland
-X1	2	Aardrl. 4MM2 gr/gr WK4S/U	V04-6 CONN.PALUL.	Wieland
-X1	2	Conn. railk. 6MM2 grfs WK6S/U	V05E 4-4 CONN.AABDKL	Wieland
-X1	1	Endstein V4 Ilean 9708/2535	V05E 4+6 CONN.AABDKL	Wieland
-X2	22	Conn. railk. 4MM2 grfs WK4/U	ENDSTEIN V4 CONL.ACC	Wieland
-X2	4	Aardrl. 4MM2 gr/gr WK4S/U	V04-4 GRDS CONN.R.K.	Wieland
-X2	2	Endstein V4 Ilean 9708/2535	V05E 4-4 CONN.AABDKL	Wieland
-X2	1	Circuit breaker AB 3P 2A C-Char UL 489 1400/277V	ENDSTEIN V4 CONL.ACC	Wieland
-X2	1	Circuit breaker AB 3P 2A C-Char UL 489 1400/277V	GR061489-AS3020	Allen Bradley
-X0A1	1	Contactor 37kW 400VAC coil 230 VAC 1NO/1NC	LC1-D08-P7	Schneider Electric
-X0A1	1	Prim. 75/5A 3,75VA/K1 UL-CSA	M5SE-94A	Crompton
-X0A1	1	Amperemeter 75A/5A 48-48 met connemask E242-75AG	IQEQ48 75A/5A	Crompton
-X0A1	1	IV48 48-48mm, IP-20	IQEQ 48 AFDBKAP	Crompton
-X0A1	1	Voltneter 500V 48-48 met connemask E242-75AG Crompton	IQEQ48 500V	Crompton
-X0A1	1	Motor safety switch 40-50A	SIEH 38V1031-4HA10	Siemens
-X0A1	1	Auxiliary contact for 38V10 circuit breaker 1NC+1NO	SIEH 38V1901-1E	Siemens
-X0A1	1	Hoofdschak. 100A, 3P met vergrendelaar	PS-100/E	Kraus Nehler
-X0A1	1	Fusibutton head @22 spring return without cap	ZBS-440	Schneider Electric